



**LARGE SIZE DRILLING TOOLS**



# TABLE OF CONTENTS

---



## ABOUT US

Introducing Pile Critter .....	5
--------------------------------	---

## PRODUCTS

Large size DTH Hammers.....	6
Large size DTH Bits.....	11
Cluster drills .....	15

## CONTACTS

Team contact info.....	27
------------------------	----



## COMPANY

Founded in 2022, PileCrittter is a swiftly growing company in the European drilling market. Our team, though small, is rich in diversity and expertise, encompassing a range of roles from strategic leadership to market-specific business development. Fluent in multiple languages, our team is well-equipped to cater to various European markets. Together, our mission is rooted in delivering value through reliable, high-performance tools essential for construction and civil engineering.

At PileCrittter, we're driven by a relentless dedication to our customers, aiming to be the cornerstone of Europe's drilling industry. Our vision encompasses not just supplying tools but fostering growth and progress in every project we touch. We're focused on enhancing our services by developing rapid response teams, further decreasing dispatch times, and expanding our product catalogue. Join us in redefining drilling industry standards with solutions that speak of quality, efficiency, and innovation!

## EU HUB

Focusing on local stock within Europe, PileCrittter has significantly reduced delivery times and improved service dependability for our European clients. This strategic move underscores our dedication to addressing the unique requirements of the European market and strengthening our position in the region.

## BESPOKE SERVICE

We are eager to take on special requests, ensuring clients receive precisely what they need for their projects. We specialize in understanding unique requirements and leveraging an extensive product range to fulfill even the most specific demands. With a focus on customization and adaptability, our team is committed to turning special requests into reality, offering solutions that are not just satisfactory, but perfectly aligned with each client's unique business needs.



## LARGE SIZE DTH HAMMERS

# LARGE SIZE DTH HAMMERS



## WSD12AR HAMMER

ITEM DESCRIPTION	WEIGHT		PART. NO.
	KG	LB	
1. Top Sub	130	286	WSD12AR-01
2. O-ring	0.01	0.02	218X5.3/GB3452.1
3. Make-up Ring	1	2.20	WSD12AR-02
4. Check Valve	1.6	3.53	WSD12AR-03
5. Spring	0.15	0.33	WSD12AR-04
6. Air Distributor	20.5	45.10	WSD12AR-05
7. Inner Cylinder	28.6	62.92	WSD12AR-06
8. Piston	118	259.60	WSD12AR-07
9. Wear Sleeve	192	422.40	WSD12AR-08
10. Bit Retainer	5.2	11.44	WSD12AR-09
11. O-ring	0.01	0.02	203X5.2/GB3452.1
12. Guide Sleeve	9.8	21.56	WSD12AR-10
13. Chuck	48.6	106.92	WSD12AR-11
Seal Kit   02x1   11X1	Rebuild kit   05x1   09x1   10x1   13x1   Seal kit		

BIT SPECIFICATION		
No. of Spines	8	
L (mm)	470	
L (inch)	18.5	
Bit Shank	SD12	
Bit Diameter (mm)	∅305 - ∅380	
Bit Diameter (inch)	12-15	



SPECIFICATIONS	METRIC	IMPERIAL
Hammer length without bit	1823 mm	77.71 in
Weight without bit	556 kg	1225.77 lb
Outside diameter of the hammer	∅270 mm	10.63 in
Top sub thread	API 6 5/8" REG PIN	
Working air pressure range	15-33 bar / 217.6-478.6 psi	
Recommended rotary speed	25-50 r/min	
Impact rate at 17 bar	18 Hz	
Air consumption	1765.5 cfm @ 261 psi	40 m3/min @ 18 bar
	2471.7 cfm @ 348 psi	55 m3/min @ 24 bar

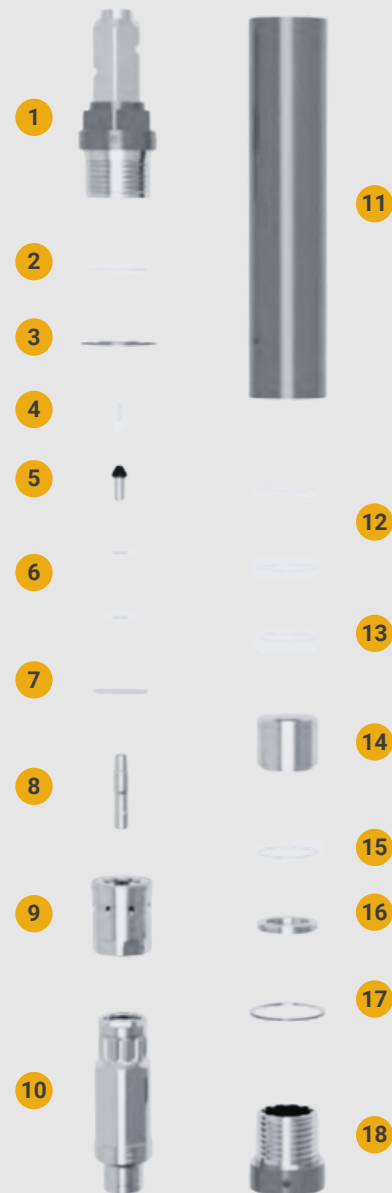
# LARGE SIZE DTH HAMMERS



## WNN125 HAMMER

ITEM DESCRIPTION	WEIGHT		PART. NO.
	KG	LB	
1. Top Sub	231	509.27	WNN125-01
2. O-ring	0.01	0.02	261*5.3
3. Make-up ring	2.3	5.07	WNN125-02
4. Spring	0.05	0.11	WNN125-04
5. Check valve	1.3	2.87	WNN125-03
6. O-ring	0.01	0.02	59*5.7
7. Retainer pin	0.8	1.76	WNN125-05
8. Air distributor	2.8	8.38	WNN125-06
9. O-ring	0.01	0.02	228*8.5
10. Internal Cylinder	50.8	112	WNN125-07
11. Piston	198.8	438.28	WNN125-09
12. O-ring	0.01	0.02	243*5.7
13. Retainer ring	0.16	0.35	WNN125-11
14. Guided sleeve	35.5	78.26	WNN125-10
15. Wear sleeve	337	742.96	WNN125-08
16. O-ring	0.01	0.02	240*6
17. Bit retainer	6.8	15	WNN125-12
18. Chuck ring	3	6.6	WNN125-13
19. Chuck	71.5	157.63	WNN125-14
Rebuild kit - 02x1 / 04x1 / 06x2 / 09x1 / 12x2 / 16x1 / 17x1			

BIT SPECIFICATION		
No. of Spines	10	
L (mm)	490.5	
L (inch)	19.31	
Bit Shank	N125	
Bit Diameter (mm)	Ø356 - Ø525	
Bit Diameter (inch)	14 - 20 5/8	



SPECIFICATIONS	
Hammer length without bit (mm/in)	2229 / 87.76
Weight without bit (kg/lb)	943 / 2078.96
Outside diameter of the hammer (mm/in)	Ø320 / 12.6
Top sub thread	Hex Joint
Working air pressure range (bar/psi)	17-30 bar / 246-435 psi
Recommended rotary speed (r/min)	30-40
Impact Rate at 17 Bar (Hz)	30-33
Air consumption (cfm / m3/min)	350 psi: 2513 / 24 bar: 71



# LARGE SIZE DTH HAMMERS



## WT320 HAMMER

ITEM DESCRIPTION	WEIGHT		PART. NO.
	KG	LB	
1. Top Sub	182.4	402.12	WT320-1
2. O-ring	0.01	0.02	250*8
3. Make-up ring	1.8	3.97	WT320-2
4. Steel ring	1.7	3.75	WT320-5
5. Bearing Pad	0.55	1.21	WT320-6
6. Check valve	2.3	507	WT320-3
7. Spring	0.5	1.1	WT320-4
8. Air distributor	34	74.96	WT320-7
9. Internal cylinder	32	70.55	WT320-8
10. Pyston	210	462.97	WT320-9
11. Wear sleeve	380	837.76	WT320-10
12. Piston ring	3	6.61	WT320-11
13. Retainer ring	0.2	0.44	WT320-12
14. Bit retainer	7	15.43	WT320-13
15. O-ring	0.01	0.02	224*5.3
16. Guided sleeve	11	24.25	WT320-14
17. Chuck ring	1.8	3.97	WT320-17
18. Chuck	70	154.32	WT320-15
Rebuild kit - 02 x 1 / 07 x 1 / 14 x 1 / 15 x 1			

BIT SPECIFICATION		
No. of Spines	10	
L (mm)	490	
L (inch)	19.29	
Bit Shank	WT320	
Bit Diameter (mm)	Ø445 - Ø525	
Bit Diameter (inch)	17 7/15 - 20 5/8	



SPECIFICATIONS	
Hammer length without bit (mm/in)	2156 / 84.88
Weight without bit (kg/lb)	938.5 / 2069.04
Outside diameter of the hammer (mm/in)	Ø322 / 12.68
Top sub thread	Hex Joint
Working air pressure range (bar/psi)	17-30 bar / 246-435 psi
Recommended rotary speed (r/min)	30-35
Impact Rate at 17 Bar (Hz)	30-33
Air consumption (cfm / m3/min)	350 psi: 2655 / 24 bar: 75

# LARGE SIZE DTH HAMMERS



## WT370 HAMMER

ITEM DESCRIPTION	WEIGHT		PART. NO.
	KG	LB	
1. Top Sub	220	485	WT370-1
2. O-ring	0.01	0.02	300*8
3. Make-up ring	2.1	4.63	WT370-2
4. Steel ring	2.3	5.07	WT370-5
5. Bearing Pad	0.8	1.76	WT370-6
6. Check valve	2.3	5.07	WT370-3
7. Spring	0.5	1.1	WT370-4
8. Air distributor	70	154.32	WT370-7
9. Internal cylinder	60	132.28	WT370-8
10. Pyston	300	661.39	WT370-9
11. Wear sleeve	540	1190.5	WT370-10
12. Piston ring	8	17.64	WT370-11
13. Retainer ring	0.3	0.66	WT370-12
14. Bit retainer	9	19.84	WT370-13
15. O-ring	0.01	0.02	276*5.3
16. Guided sleeve	12	26.46	WT370-14
17. Chuck ring	2.1	4.63	WT370-15
18. Chuck	100	220.46	WT370-16

Rebuild kit - 02 x 1 / 07 x 1 / 14 x 1 / 15 x 1

BIT SPECIFICATION		
No. of Spines	10	
L (mm)	525	
L (inch)	20.7	
Bit Shank	WT370	
Bit Diameter (mm)	Ø460 - Ø625	
Bit Diameter (inch)	18 1/8 - 24 5/8	



SPECIFICATIONS	
Hammer length without bit (mm/in)	2310 / 90.94
Weight without bit (kg/lb)	1329.5 / 2931.05
Outside diameter of the hammer (mm/in)	Ø375 / 14.76
Top sub thread	Hex Joint
Working air pressure range (bar/psi)	17-30 bar / 246.6-435.1 Psi
Recommended rotary speed (r/min)	30-35
Impact Rate at 17 Bar (Hz)	30-33
Air consumption (cfm / m3/min)	350psi: 2832 / 24bar: 80

A large, dark, industrial DTH bit is shown lying on a rocky surface. The bit is a complex, multi-part tool with a cylindrical body and a flared, multi-ported end. The background is a dark, hazy landscape with mountains in the distance. The text "LARGE SIZE DTH BITS" is overlaid in white, bold, sans-serif font on the left side of the bit.

**LARGE SIZE DTH BITS**

# NUMA SERIES



## N100

	DIAMETER		FLUSHING HOLE	SPINE	GAUGE BUTTON	FRONT BUTTON	LENGTH OF BIT SHANK	WEIGHT	
	mm	inch	No.	No.	No. mm	No. mm	mm	Kg	lb
	Ø254	10	2	10	12XØ18	24XØ16	375	86.87	191.5
	Ø305	12	3	10	12XØ18	24XØ6	375	105.5	232.6
	Ø311	12 1/4	4	10	12XØ18	36XØ16	375	108	238.1
	Ø325	12 3/4	4	10	12XØ18	38XØ16	375	110	242.5

## N120

	DIAMETER		FLUSHING HOLE	SPINE	GAUGE BUTTON	FRONT BUTTON	LENGTH OF BIT SHANK	WEIGHT	
	mm	inch	No.	No.	No. mm	No. mm	mm	Kg	lb
	Ø305	12	3	12	12XØ18	24XØ16	490.5	152	335.1
	Ø311	12 1/4	4	12	12XØ18	36XØ16	490.5	158	348.3
	Ø325	12 3/4	4	12	16XØ18	42XØ16	490.5	162	357.1
	Ø355	14	4	12	16XØ19	48XØ16	490.5	178	392.4
	Ø380	15	4	12	16XØ19	48XØ16	490.5	195	429.9

## N125

	DIAMETER		FLUSHING HOLE	SPINE	GAUGE BUTTON	FACE BUTTONS	SPARE BUTTONS	LENGTH OF BIT SHANK	WEIGHT	
	mm	inch	No.	No.	No. mm	No. mm	No. mm	mm	Kg	lb
	Ø400	15 3/4	4	10	28XØ20	55XØ18	28XØ16	490.5	260	573.2
	Ø425	16 3/4	4	10	28XØ20	61XØ16	28XØ16	490.5	270	595
	Ø445	17 1/2	4	10	28XØ20	67XØ18	28XØ16	490.5	280	617.3
	Ø475	18 3/4	4	10	16XØ20 + 16XØ19	71XØ18	36XØ16	490.5	309	681
	Ø500	19 5/8	4	10	16XØ20 + 16XØ19	72XØ18	36XØ16	490.5	338	745
	Ø525	20 5/8	4	10	16XØ20 + 16XØ19	100XØ18	32XØ16	490.5	365	804.7

# SD / WT SERIES



## SD12

	DIAMETER		FLUSHING HOLE	SPINE	GAUGE BUTTON	FRONT BUTTON	LENGTH OF BIT SHANK	WEIGHT	
	mm	inch	No.	No.	No. mm	No. mm	mm	Kg	lb
	Ø311	12 1/4	3	8	21XØ18	27XØ16	470	130	286.6
	Ø350	13 3/4	3	8	27XØ18	36XØ18	470	150	330.7
	Ø380	15	4	8	28XØ19	20XØ19 24XØ16	470	180	396.8
	Ø430	16 14/15	4	8	28XØ19	53XØ19	470	225	496
	Ø445	17 7/15	4	8	28XØ19	55XØ19	470	235	518.1

## WT270

	DIAMETER		FLUSHING HOLE	SPINE	GAUGE BUTTON	FRONT BUTTON	SPARE BUTTONS	LENGTH OF BIT SHANK	WEIGHT	
	mm	inch	No.	No.	No. mm	No. mm	No. mm	mm	Kg	lb
	Ø380	15	3	8	27xØ19	36xØ19	24xØ16	468	200	441
	Ø390	15 3/8	3	8	27xØ19	39xØ19	24xØ16	468	210	463
	Ø445	17 7/15	4	8	28xØ19	61xØ18	32xØ16	468	260	573.2

## WT320

	DIAMETER		FLUSHING HOLE	SPINE	GAUGE BUTTON	FACE BUTTONS	SPARE BUTTONS	LENGTH OF BIT SHANK	WEIGHT	
	mm	inch	No.	No.	No. mm	No. mm	No. mm	mm	Kg	lb
	Ø445	17 7/15	4	10	28XØ19	61XØ19	32XØ16	490	315	694.5
	Ø475	18 3/4	4	10	32XØ19	65XØ19	32XØ16	490	329	725
	Ø525	20 5/8	4	10	40XØ19	74XØ19	32XØ16	490	415	915

# WT SERIES



## WT320IR

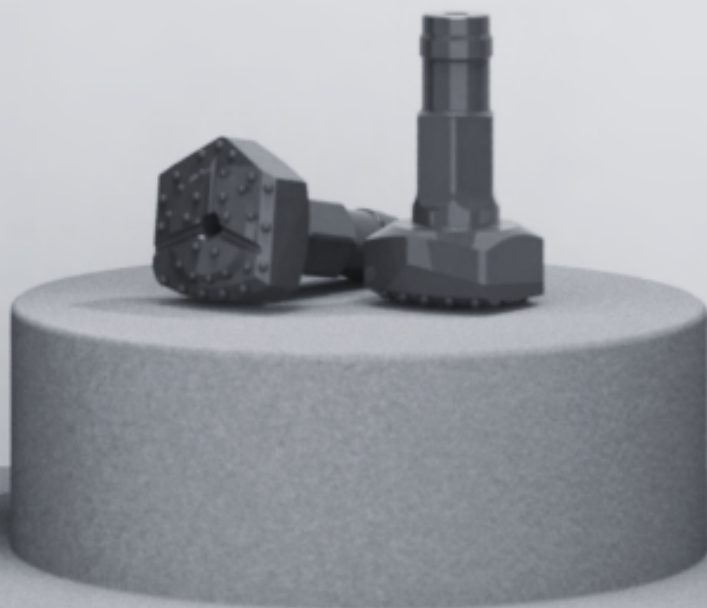
	DIAMETER		FLUSHING HOLE	SPINE	GAUGE BUTTON	FACE BUTTONS	SPARE BUTTONS	LENGTH OF BIT SHANK	WEIGHT	
	mm	inch	No.	No.	No. mm	No. mm	No. mm	mm	Kg	lb
	Ø445	17 7/15	4	12	28xØ19	61xØ19	32xØ16	455	305	672
	Ø475	18 3/4	4	12	32xØ19	65xØ19	32xØ16	455	320	705
	Ø525	20 5/8	4	12	40xØ19	74xØ19	32xØ16	455	405	892.9

## WT370

	DIAMETER		FLUSHING HOLE	SPINE	GAUGE BUTTON	FRONT BUTTON	SPARE BUTTONS	LENGTH OF BIT SHANK	WEIGHT	
	mm	inch	No.	No.	No. mm	No. mm	No. mm	mm	Kg	lb
	Ø460	18 1/8	4	10	32XØ19	65XØ19	32XØ16	525	405	892.87
	Ø475	18 3/4	4	10	32XØ19	65XØ19	32XØ16	525	420	925.94
	Ø525	20 5/8	4	10	40XØ19	74XØ19	32XØ16	525	473	1042.8
	Ø545	21 7/15	4	10	40XØ19	74XØ19	32XØ16	525	490	1080
	Ø575	22 3/5	4	10	48XØ19	92XØ19	32XØ16	525	520	1146.4
	Ø625	24 5/8	4	10	48XØ19	102XØ16	32XØ16	525	615	1355



## CLUSTER DRILLS





# CLUSTER DRILLS

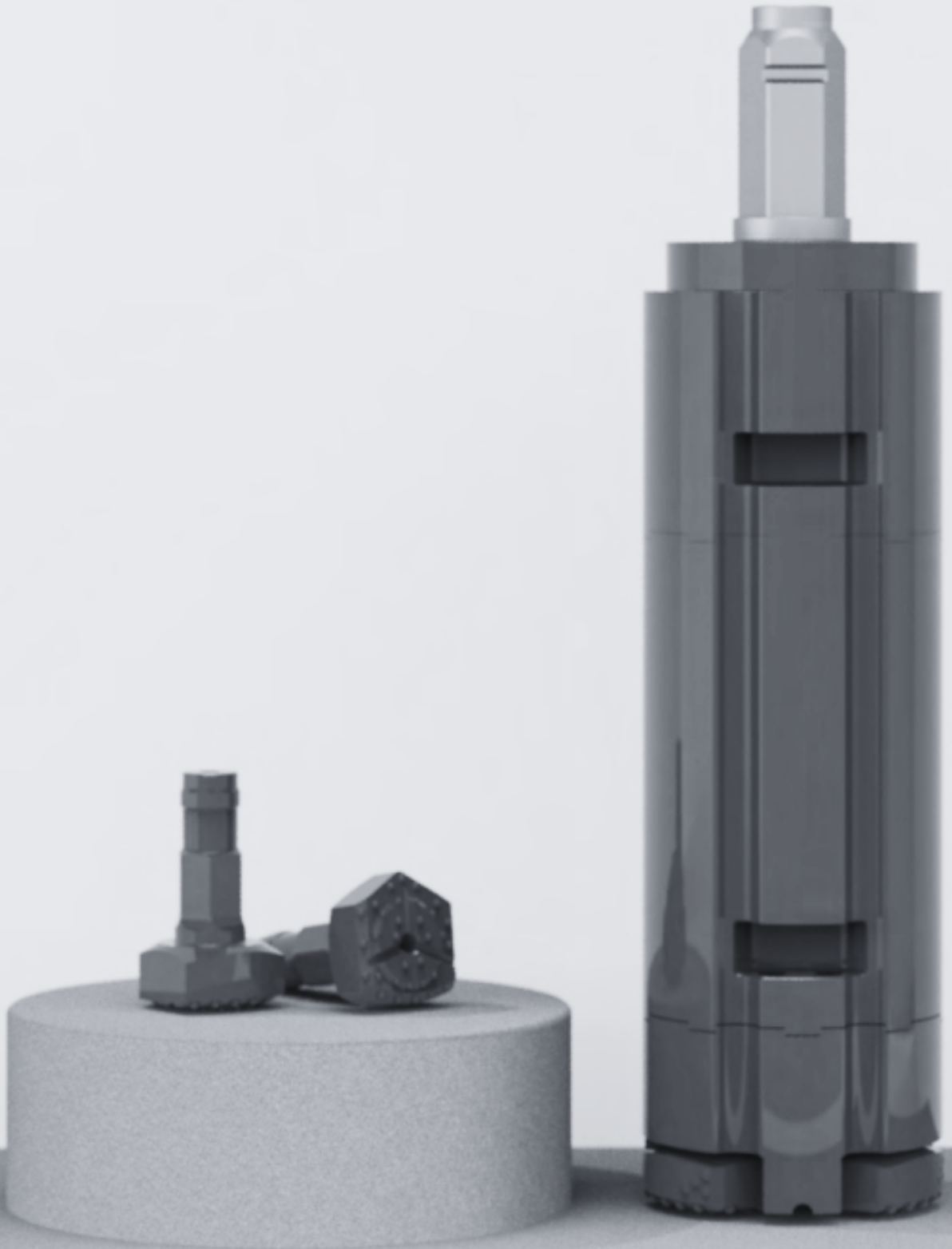


## WTC380

PARTS	WEIGHT		PART. NO.	QTY
	KG	LB		
1. Top Sub	82	180.78	WTC380-01	1
2. Hex Socket	0.1	0.22	WTC380-02	12
3. O ring	0.01	0.02	200*5.7 O RING	1
4. Storage cylinder	173	381.4	WTC380-03	1
5. O ring	0.01	0.02	100*3.55 O RING	3
6. Hex nut	0.06	0.13	WTC380-04	6
7. Gasket	0.01	0.02	WTC380-05	6
8. Screw	1.6	3.53	WTC380-06	6
9. O ring	0.01	0.02	132*3.55 O RING	6
10. Body	336	740.75	WTC380-07	1
11. Hex bushing	1.4	3.1	WTC380-08	3
12. Bit guide	82	180.8	WTC380-09	1
13. Bits	22.85	50.38	WTC-380	3
14. Check valve	0.6	1.32	WTC380-10-01	3
15. Spring	0.05	0.11	WTC380-10-02	3
16. Air distributor	2.2	4.85	WTC380-10-03	3
17. Inner cylinder	4.05	8.93	WTC380-10-04	3
18. Spring hook	0.15	0.33	WTC380-10-05	3
19. Outer cylinder	17.8	39.24	WTC380-10-06	3
20. Piston	15.1	33.29	WTC380-10-07	3
21. Bushing	2.7	5.95	WTC380-10-08	3
22. Spring hook	0.04	0.09	WTC380-10-09	3
23. Valve sleeve	0.6	1.32	WTC380-10-10	3
24. O ring	0.01	0.02	160*3.55 O RING	3
25. Bit Retainer	1.5	3.31	WTC380-10-11	3



BIT SPECIFICATION		
Connection	Hex	
L (mm)	190	
L (inch)	7.5	
Bit Shank	WTC-380	



# CLUSTER DRILLS

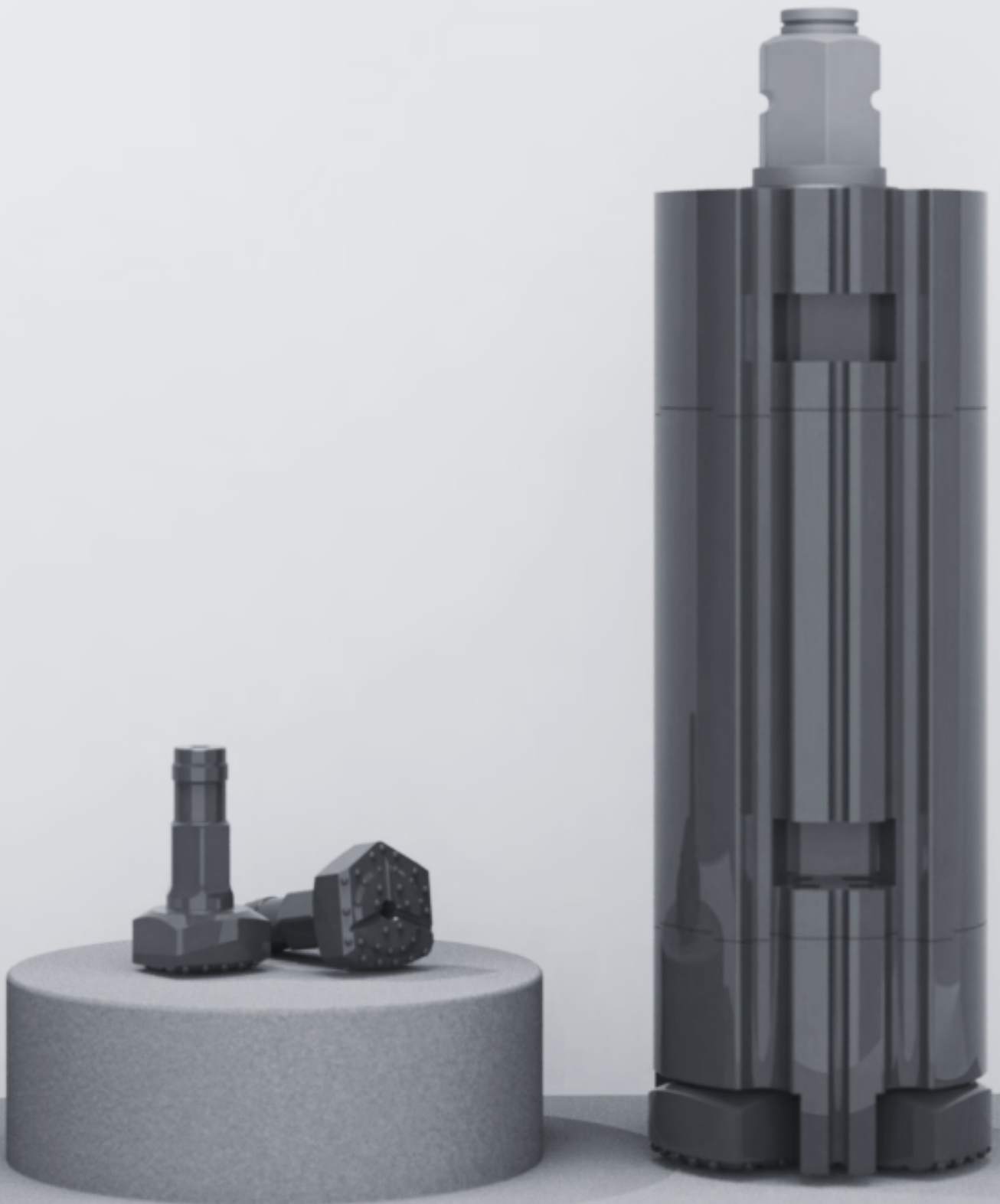


## WTC445

PARTS	WEIGHT		PART. NO.	QTY
	KG	LB		
1. Top Sub	85.6	188.72	WTC445-01	1
2. Hex Socket	0.1	0.22	WTC445-02	12
3. O ring	0.01	0.02	200*5.7 O RING	1
4. Storage cylinder	351	773.82	WTC445-03	1
5. O ring	0.01	0.02	101*3.55 O RING	2
6. Hex nut	0.05	0.11	WTC445-04	12
7. Gasket	0.01	0.02	WTC445-05	12
8. Screw	1.6	3.53	WTC445-06	12
9. O ring	0.01	0.02	150*3.55 O RING	6
10. Body	487	1073.65	WTC445-07	1
11. Hex bushing	1.95	4.3	WTC445-08	3
12. Bit guide	170	374.79	WTC445-09	1
13. Bits	42.5	93.7	WTC-445T	3
14. Check valve	0.6	1.32	WTC445-10-01	3
15. Spring	0.05	0.11	WTC445-10-02	3
16. Air distributor	3.5	7.72	WTC445-10-03	3
17. Inner cylinder	5.3	11.68	WTC445-10-04	3
18. Spring hook	0.17	0.37	WTC445-10-05	3
19. Outer cylinder	17.95	39.57	WTC445-10-06	3
20. Piston	24.1	53/13	WTC445-10-07	3
21. Bushing	5.3	11.68	WTC445-10-08	3
22. Spring hook	0.06	0.13	WTC445-10-09	3
23. Valve sleeve	0.75	1.65	WTC445-10-10	3
24. Bit retainer	1.85	4.08	WTC445-10-11	3
25. O ring	0.01	0.02	132*3.55 O RING	3



BIT SPECIFICATION		
Connection	Hex	
L (mm)	253	
L (inch)	9.96	
Bit Shank	WTC-445	



# CLUSTER DRILLS

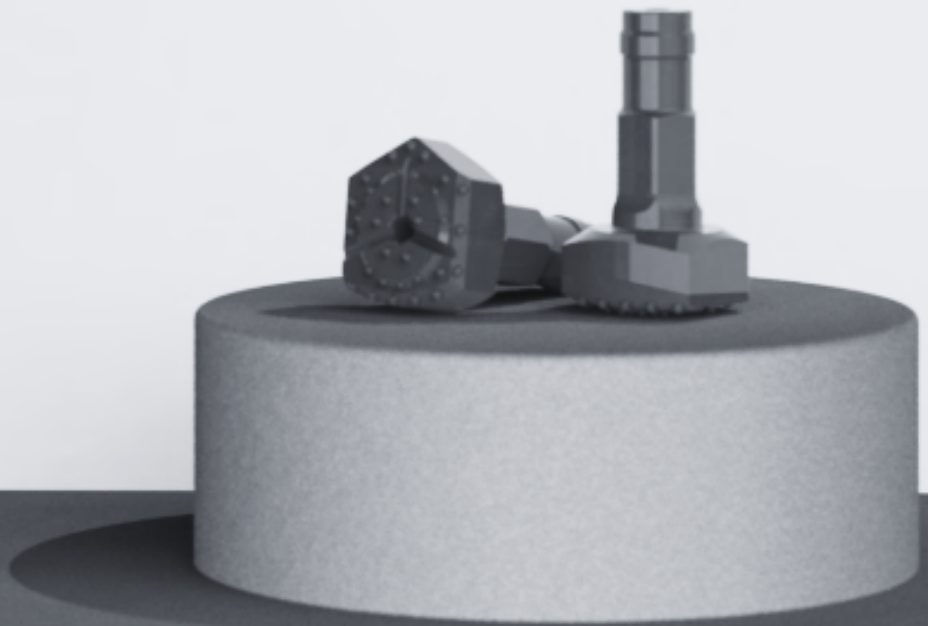


## WTC465

PARTS	WEIGHT		PART. NO.	QTY																																								
	KG	LB																																										
1. Top Sub	64/5	142.2	WTC465-01	1																																								
2. Storage cylinder	409	901.69	WTC465-02	1																																								
3. Hex nut	0.05	0.11	WTC465-03	12																																								
4. Gasket	0.01	0.02	WTC465-04	12																																								
5. Screw	1.6	3.53	WTC465-05	12																																								
6. Body	490	1080.27	WTC465-06	1																																								
7. Bit guide	165	363.76	WTC465-07	1																																								
8. Hex bushing	1.95	4.3	WTC465-08	3																																								
9. Bits	42.85	94.47	WTC-465	3																																								
10. Check valve	0.6	1.32	WTC465-09-01	3																																								
11. Spring	0.05	0.11	WTC465-09-02	3																																								
12. Air distributor	3.5	7.72	WTC465-09-03	3																																								
13. Inner cylinder	5.3	11.68	WTC465-09-04	3																																								
14. Spring hook	0.17	0.37	WTC465-09-05	3 </tr <tr> <td>15. O ring</td> <td>0.01</td> <td>0.02</td> <td>150*5.3 O RING</td> <td>3</td> </tr> <tr> <td>16. Outer cylinder</td> <td>17.95</td> <td>39.57</td> <td>WTC465-09-06</td> <td>3</td> </tr> <tr> <td>17. Piston</td> <td>24.1</td> <td>53.13</td> <td>WTC465-09-07</td> <td>3</td> </tr> <tr> <td>18. Bushing</td> <td>5.3</td> <td>11.68</td> <td>WTC465-09-08</td> <td>3</td> </tr> <tr> <td>19. Piston retainer ring</td> <td>0.06</td> <td>0.13</td> <td>WTC465-09-09</td> <td>3</td> </tr> <tr> <td>20. Valve sleeve</td> <td>0.75</td> <td>1.65</td> <td>WTC465-09-10</td> <td>3</td> </tr> <tr> <td>21. O ring</td> <td>0.01</td> <td>0.02</td> <td>132*3.55 O RING</td> <td>3</td> </tr> <tr> <td>22. Bit retainer</td> <td>1.85</td> <td>4.08</td> <td>WTC465-09-11</td> <td>3</td> </tr>	15. O ring	0.01	0.02	150*5.3 O RING	3	16. Outer cylinder	17.95	39.57	WTC465-09-06	3	17. Piston	24.1	53.13	WTC465-09-07	3	18. Bushing	5.3	11.68	WTC465-09-08	3	19. Piston retainer ring	0.06	0.13	WTC465-09-09	3	20. Valve sleeve	0.75	1.65	WTC465-09-10	3	21. O ring	0.01	0.02	132*3.55 O RING	3	22. Bit retainer	1.85	4.08	WTC465-09-11	3
15. O ring	0.01	0.02	150*5.3 O RING	3																																								
16. Outer cylinder	17.95	39.57	WTC465-09-06	3																																								
17. Piston	24.1	53.13	WTC465-09-07	3																																								
18. Bushing	5.3	11.68	WTC465-09-08	3																																								
19. Piston retainer ring	0.06	0.13	WTC465-09-09	3																																								
20. Valve sleeve	0.75	1.65	WTC465-09-10	3																																								
21. O ring	0.01	0.02	132*3.55 O RING	3																																								
22. Bit retainer	1.85	4.08	WTC465-09-11	3																																								



BIT SPECIFICATION		
Connection	Hex	
L (mm)	253	
L (inch)	9.96	
Bit Shank	WTC-465	



# CLUSTER DRILLS

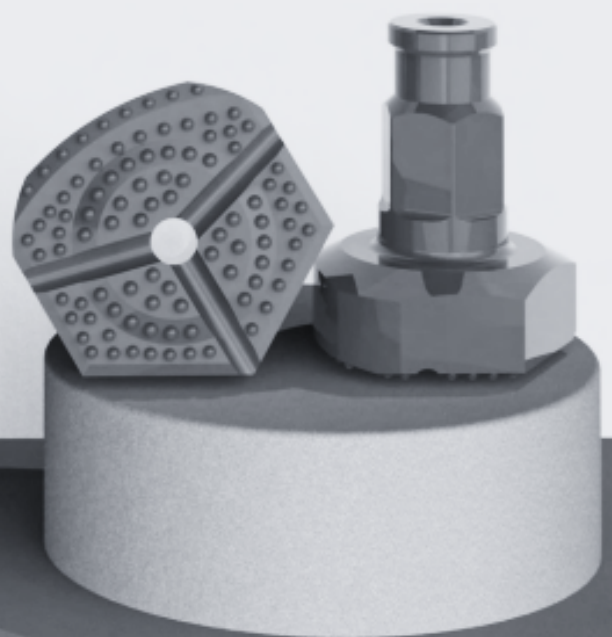


## WTC525

PARTS	WEIGHT		PART. NO.	QTY
	KG	LB		
1. Top Sub	64.5	142.2	WTC525-01	1
2. Storage cylinder	449	989.88	WTC525-02	1
3. Hex nut	0.05	0.11	WTC525-03	12
4. Gasket	0.01	0.02	WTC525-04	12
5. Screw	1.6	3.53	WTC525-05	12
6. Body	604.8	1333.36	WTC525-06	1
7. Bit guide	262.8	579.37	WTC525-07	1
8. Hex bushing	5.4	11.9	WTC525-08	3
9. Bits	70.35	155.1	WTC-525	3
10. Check valve	0.85	1.87	WTC525-09-1	3
11. Spring	0.05	0.11	WTC525-09-2	3
12. Air distributor	8.3	18.3	WTC525-09-3	3
13. Inner cylinder	7.4	16.31	WTC525-09-4	3
14. O ring	0.01	0.02	118*5.3 O RING	3
15. O ring	0.01	0.02	143*5.3 O RING	3
16. Outer cylinder	52.1	114.86	WTC525-09-5	3
17. Piston	39.5	87.08	WTC525-09-6	3
18. Bushing	7.9	17.42	WTC525-09-7	3
19. Valve sleeve	3.7	8.16	WTC525-09-8	3
20. O ring	0.01	0.02	160*3.55 O RING	3
21. Bit retainer	3.3	7.28	WTC525-09-9	3



BIT SPECIFICATION		
Connection	Hex	
L (mm)	332	
L (inch)	13.07	
Bit Shank	WTC-525	





# CLUSTER DRILLS



## WTC525

PARTS	WEIGHT		PART. NO.	QTY
	KG	LB		
1. Top Sub	156	343.9	WTC800-4	1
2. Storage cylinder	1115.8	2459.9	WTC800-3	1
3. Hex nut	0.5	1.1	M64*6	12
4. Gasket	0.01	0.02	Ø 64 GASKET	12
5. Screw	2	4.4	WTC800-12	12
6. O ring	0.05	0.11	240*5.3 O RING	3
7. Body	2206.5	4864.5	WTC800-2	1
8. O ring	0.05	0.11	275*5.3 O RING	3
9. Hex bushing	6.4	14.1	WTC800T-9	3
10. Bit guide	652	1437.4	WTC800-1	1
11. Bits	265	584.2	WTC-800	3
12. Check valve	3.6	7.9	WTC800-1	3
13. Spring	0.1	0.22	WTC800-2	3
14. Air distributor	20.4	45	WTC800-3	3
15. Inner cylinder	26.5	58.4	WTC800-4	3
16. Pisto retainer ring	0.6	1.3	WTC800-5	3
17. Outer cylinder	128.4	283	WTC800-8	3
18. Piston	136.3	300.5	WTC800-6	3
19. Busing	24.8	54.7	WTC800-7	3
20. Valve sleeve	10.8	23.8	WTC800-11	3
21. Bit retainer	4.5	9.9	WTC800-10	3



BIT SPECIFICATION		
Connection	Hex	
L (mm)	409	
L (inch)	16.1	
Bit Shank	WTC-800	



## Connect with us for a personalised service.

Reach out to be assigned your dedicated account manager, ready to assist with all your project needs:

Tel: +371 200 20 375

E-mail: [info@pilecritter.com](mailto:info@pilecritter.com)

[www.pilecritter.com](http://www.pilecritter.com)

